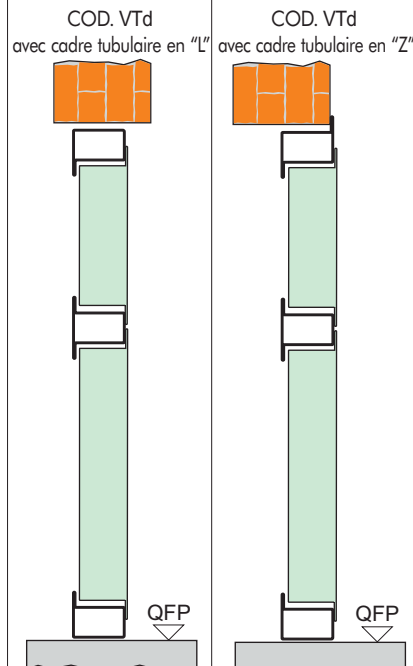
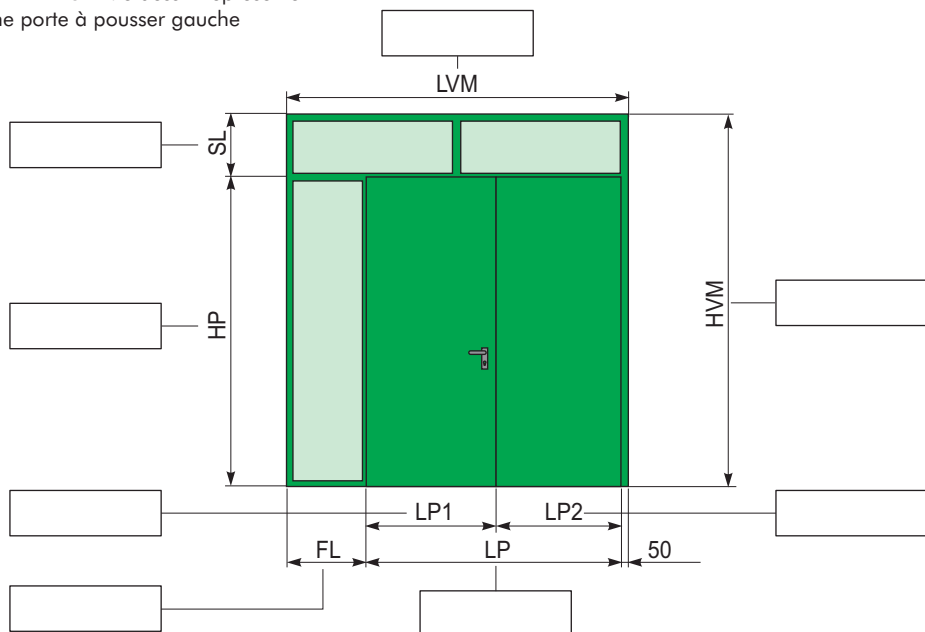
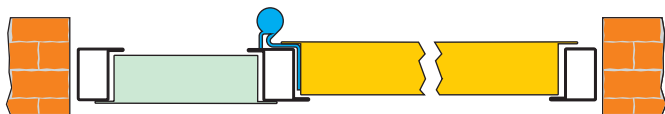


DÉFINITION MESURE PORTE

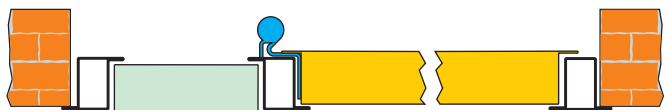
ATTENTION : le dessin représente une porte à pousser gauche



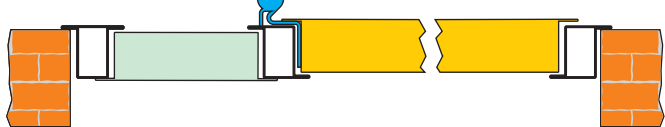
COD. VTd avec cadre tubulaire en "L"



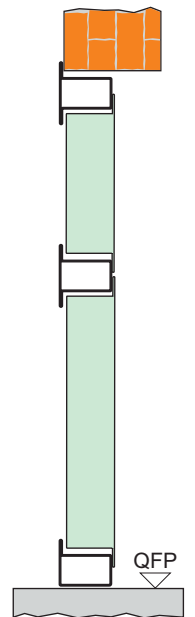
COD. VTd avec cadre tubulaire en "Z"



COD. VTd avec cadre tubulaire en "T"



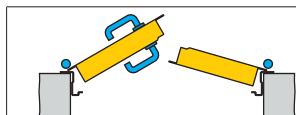
COD. VTd avec cadre tubulaire en "T"



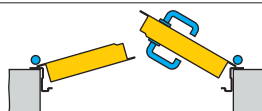
TYOLOGIE DE FIXATION

- CADRE A SCELLER (A MURARE)
- CADRE A VISSER (A TASSELLARE)

CACHET + VISA



**POUSSANTE
GAUCHE**



**POUSSANTE
DROITE**